

Features

- Compatible with D9024 and D10024 Analog Fire Alarm Control Panels (FACP)
- Supports an RS 485 circuit for up to 32 serial peripheral devices such as annunciators, controllers, and notification appliances
- Supports up to 15 D9070 Fire System Controllers
- Optically isolated data interface
- Supports panel-to-master or panel-to-graphics data link
- Supports an output to network panels
- Three available ports on D9024 or D10024 panels

Description

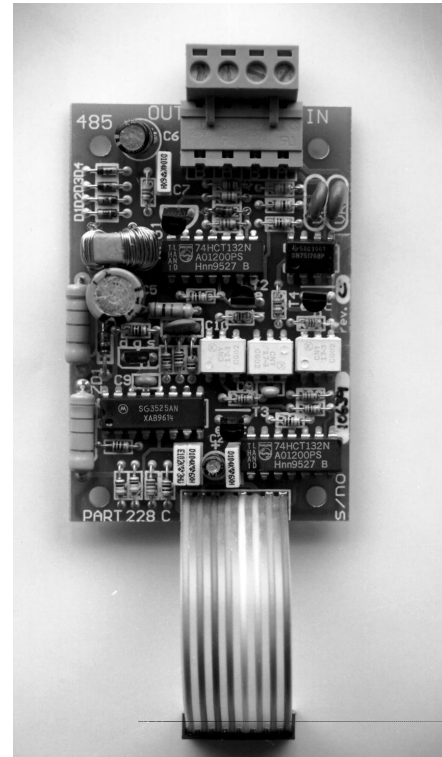
The D9051 is an RS 485 Network Expander that provides an optically isolated data interface between the Control Module of the D9024 or D10024 FACP and peripheral devices.

Connected to Port D, it supports a peripheral circuit for the D9069 remote annunciators, D9070 controllers, 4-way notification appliances such as synchronized notification appliances, and other serial peripherals.

The D9051 has two connection points for two-wire RS 485 peripheral communication circuits. This circuit may be up to 4,920 feet in length. Circuit wiring is 18 AWG twisted pair, shielded or non shielded. Notification appliances on this circuit are powered by 24-volt DC from the FACP or an approved 24-volt auxiliary power source.

Connected to Port C, the D9051 supports an RS 485 panel-to-master data link.

Connected to Port B, it supports an RS 485 output to network panels.



Application

The D9051 RS 485 module is a network expansion module that is powered by the control module of the D9024 or D10024 FACP.

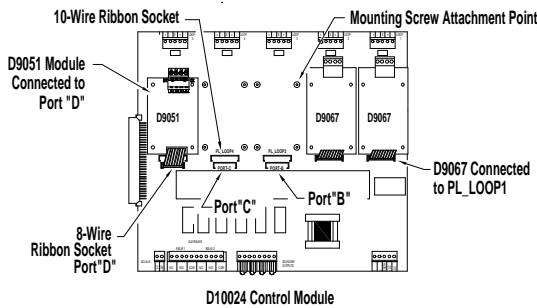
It supports up to 32 peripheral bus devices, the first 15 of which are reserved for D9070 system controllers.

Installation

The D9024 and D10024 control modules have three available ports for the D9051. Depending on the circuit configurations, both the D9051 and the D9067 Circuit Modules may mount to the same four attachment points where a 10-wire ribbon socket is above an 8-wire ribbon socket. Where this is the case, the D9051 mounts above the D9067 on 30 mm pillars. If the attachment point is not shared, the D9051 mounts directly to the control module with the 30 mm pillars.

Wiring connections are made to the control module by plugging the 8-wire ribbon connector into the 8-wire socket.

The two-wire RS 485 the peripheral circuit connects to the D9051 through the terminal block at the top of the module. Terminals are provided for two circuit connections.



D9051 Installed in Port D

Listings and Approvals

- Underwriters Laboratories
- CSFM: (submitted)
- NYC-MEA: (submitted)
- FM: (submitted)

Ordering Information

Model	Description
D10024	Complete System
D9024	Complete System
D9051	RS 485 Bus Module
D9069	Fire System Annunciator
D9070	Fire Alarm System Controller

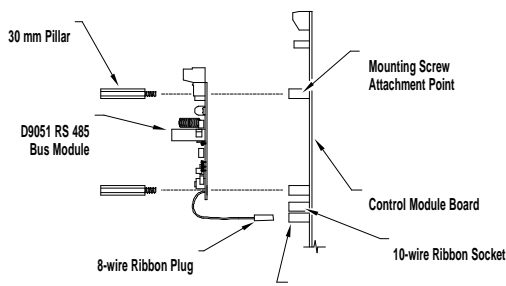
Specifications

Model Number	D9051
Panel Operating Voltage	17 to 39.5 V DC
Panel Nominal Supply Voltage	24 V DC
Operating Current Draw	59 mA/ module
Operating Temperature	32°F to 120°F
Maximum Humidity	85% RH Non-condensing (@104°F)

Dimensions

Width: 2 -1/16"

Height: 3 -1/8"



D9051 to Control Module Installation

